



# GMFab Industries

## OFFICE

**Plot No. 3595, R.B.Patil Colony,  
Gadmudshingi, Kolhapur.  
Maharashtra - 416119**

## WORKSHOP

**Plot No. A51, Five Star MIDC,  
Kagal-Hatkanagale, Kolhapur.  
Maharashtra - 416216**



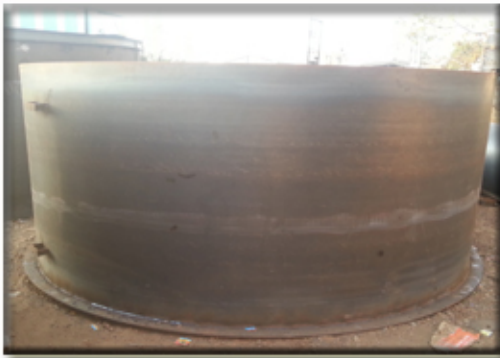


**ENGINEERING**

**FABRICATION**

**ERECTION**

**SUPPLY**



## INTRODUCTION

Established in the year 2014, GMfab Industries is involved in Heavy Steel Fabrication, Machining, Assembly of Steel Structures, Material handling Equipment and Industrial Process Equipments for Cement, Sugar, Power, Chemical, Metallurgical, Fertilizer, Petrochemical, Oil & Gas, Steel, Mining, Cement, etc. The company specializes in production of Boilers, Pressure Vessels, Heat Exchangers, Turbine Components, in most grades of materials such as Stainless, Duplex, Alloy and Carbon steels. Presently, the GMFab has manufacturing facilities spread over 10000 sq.ft area, having monthly production capacity of 50 MT and workforce of around 30 employees. Units are endowed with modern machinery and equipment to maximize automation. With a national network of dependable vendors, we ensure smooth progress of work on our shop floor to honor our most sacrosanct commitment of 'Quality and Delivery'. Presently the company is extending manufacturing support to leading global companies such as Lemken , Kirloskar Oil Engines, Shree RenukaSugars and many more. We follow international codes and standards as recommended by our customers namely ASMEBS, DIN, IS etc.

## OUR CAPABILITIES

### Structural Steel Fabrication

Columns, Beams, Bracings, Girders, Base Frames, Racks, Trusses, Bolted Structures.

### Equipments

Travelling Grate and Assembly, Pusher Grate Assembly, Tanks ( SS and MS ) , Process Equipments, Storage Tanks, ESPPollution control system for foundries, Fire Protection System.

### Miscellaneous Components

Stair Cases, Railing, Gratings, Stair Treads. Ducting (Round and Square), Insulated Ducting ,Boiler Casing , Hopper ,Bag Filter for ESP , Fan Casing, Air Foil Duct Bed Ash Cooler.Chimney, Piping, Chimney Supporting Structure.Foundation Bolts , Packers plate , Pressure part supports , Shop Attachments.Fabricated Silencer. Economizer Casings, Wind Box Assembly, Bunker , Silo ,Mechanical Dust Collector ,Bed Plate for boiler Assembly ,Fabricated Dampers SS / MS Piping and Pipe Supports. Stainless Steel FabricationsFuel Feeding Chute, Bed Plate for boiler assembly

### Surface Preparation and Painting

Surface Preparation:Copper Slag Blasting , Grit Blasting

PaintingPainting : HB Zink Phosphate , HB Zink Silicate , Alkyd Zinc

Phosphate , Epoxy Zinc Phosphate , Zinc Silicate , Synthetic Enamel , Polyurethane,

### Field Erection and Structural steel.

Shop Drawings and Detailing.

Design, Fabrication and Erection of Pre-Engineered Building.

Structures for clients as per their technical specifications.

On site Fabrication & Erection work of Structural Steel works.



## INFRASTRUCTURAL FACILITIES

Sr No	Plant	Land Area	Covered Area	Facilities
1	WorkShop	10000 Sq Feet	6000 Sq Feet	Heavy Structural Steel Work such as Column, Beam, Bracing , Girders, Ducting, Economizer Casing, Buck stay, PEB Structure, Chimney, Chimney Structure and All kind of Medium and Heavy Fabrication, Blasting and Painting Booth.

## EMPLOYEE STRENGTH

Manpower	Number
Management	2
Quality Assurance / TQM	1
Engineering Staff	2
Skilled Workers	10
Semiskilled Workers	15
Total Manpower	30

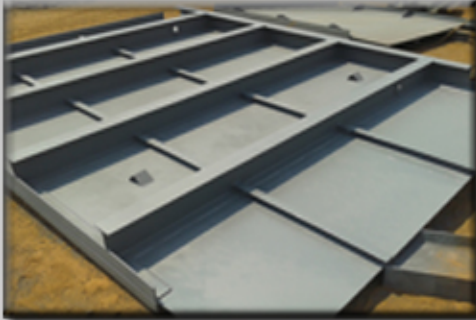
## INFRASTRUCTURAL FACILITIES

Sr No	Description	Qty	Capacity
1	Broch Cutter Machine	1	Drill Dia-20 mm to 38 mm.
2	Magnetic type Drilling Machine	1	Up to 32 mm
3	Welding Machine	5	400 Amps
4	CO2 Welding	1	400 Amps
5	Oxy Acetylene gas cutting sets	2	Upto 100 mm Thickness Cutting
6	PUG Cutting machines	1	Upto 100 mm Thickness Cutting
7	Cut-off Machine	1	-
8	7" Angle Grinders	4	7"
9	5" Angle Grinders	2	5"
10	Shaft Grinder	1	-
11	Baking & Carring Oven	1 + 1	20 Kg

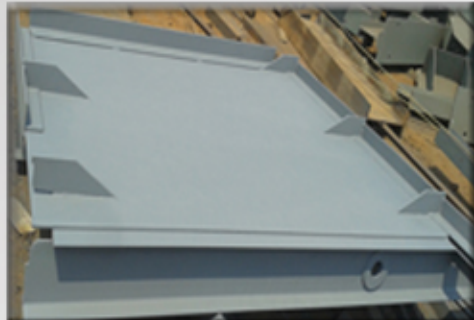




BUNKER WALL FRONT SIDE



BUNKER WALL BACK SIDE



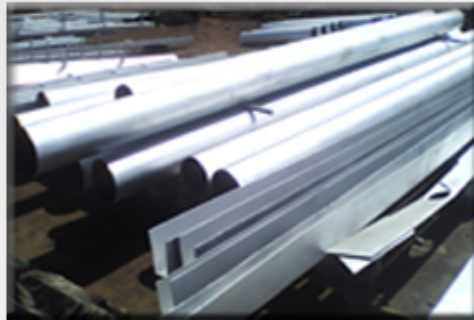
STAINLESS STEEL TANK



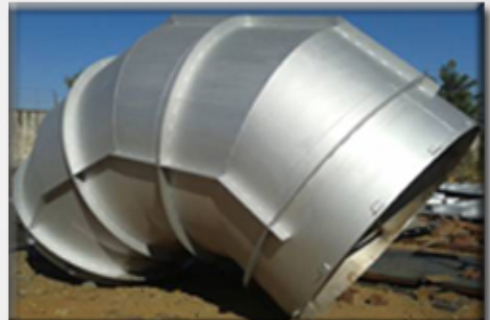
PEB COLUMN



INDUSTRIAL PIPING



ROUND DUCTING WITH BLASTING PAINTING



STRUCTURAL FABRICATION





PEB COLUMN LOADING



PLATE SPLICE JOINT

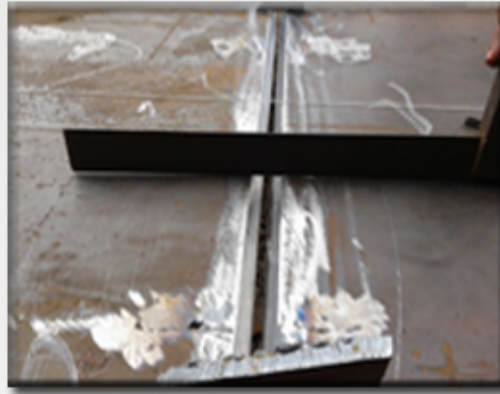


PLATE FABRICATED COLUMN



SLARYY STORAGE TANK



EXPORT PACKING



ROUND DUCTING



PEB FABRICATION





## Industrial Coatings

### INTRODUCTION

The manufacturer of the paint will supply a data sheet for the paint used. This sheet will address mixing, thinning and paint application setup. Read and understand the data sheet. The equipment will be set according to this data sheet. The pressure and orifice size settings are critical to achieve the correct spray pattern.

It is the Contractors responsibility to protect all shop-primed steel during transport, storage, and erection. Standard Specifications with organic zinc primer before the top coat is applied. The data sheet from the manufacturer lists pot life and shelf life. The pot life is the length of time that the mixed and or thinned paint can sit in the spray reservoir, usually less than three hours at 60° F. For moisture cured systems, the coating begins to cure when exposed to the atmosphere. Therefore, only paint from sealed containers should be used. The shelf-life is the time that the paint kept in a sealed container, within the proper temperature range, can be stored.



### Applications

Application methods commonly used for bridge coating include conventional spray, airless spray, brushes, rollers, and mitts.

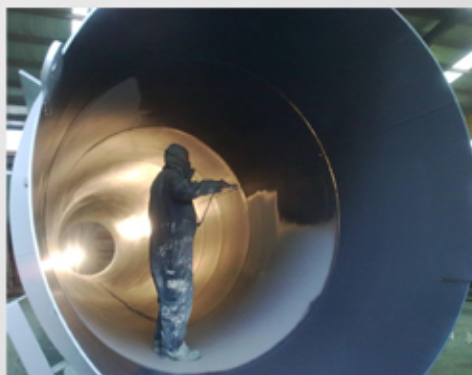
Conventional or air spray is use for spray coating both large and complicated objects. Conventional sprayers have the advantage of total control over the flow of material and therefore are used to coat complicated areas such as bolt patterns. It can also be used for minor blow off operations by turning off the coating supply.



### Coating Thickness

As the paint is being applied and after it has dried, the thickness of the coating should be checked. This is to make sure enough paint is going on the prepared surface. There are two kinds of gauges for checking wet and dry paint thickness.

Wet film thickness gauge: As the paint is being applied, a wet gauge should be used to check the amount of paint going on the surface. To be sure enough paint is being applied, the coating thickness should be checked frequently during the paint operations.





CONE HOPPER



SLARY TANK WITH BLADE



SLARY MIXER TANK



SLARY STORAGE TANK



PILATES



MOLD HANDLING BASE



HOPPER TANK



CHANNEL FRAME



ROOFING STRUCTURE



We undertake : Design , Engineering , Detailing, Fabrication, Blasting, Painting, Packing, Transportation up to site and Field Erection.  
 We can Execute Single Job up to 30 MtrLength , 12 MtrWidth and Weight up to 30 MT.  
 We are having in spray painting facility with adequate space for the same.  
 We offer Painting services for small and larger fabricated components in our Shop.  
 Painting services are also offered at site for Non Transportable components such as Tanks, Material Handling Equipments and Silos etc.


## **DIRECTORS PROFILE :**

Tushar Mali is the Founder-Director at GMFAB Industries, founded in year 2014. Tushar has his DME from Premalatai Chavan Institute, Karad. Tushar started his career with L&T Limited, Tushar carries with him over 5 years of experience in Fabrication, Blasting, Painting, Quality control and is responsible for Production, Business development, and Customer support & Finance department at GMFAB Industries.

Abhay Gaikwad is B.E.(Production) from KIT, Kolhapur is the Founder-Director at GMFAB Industries. Abhay has over 7 Years experience in site/shop Fabrication of pressure vessels, structural work, etc. He has been associated with various projects in Fabrication, Blasting, Painting of various fabricated equipments. Abhay looks after overall Production, Quality assurance departments at GMFAB Industries.

Under the guidance of Mr. Tushar & Mr. Abhay, GMFAB is running with the team of 30 employees on board. With the vision & excellent leadership skills of both Directors, GMFAB Industries is rapidly growing year.

## **TURNOVER:**



Financial Year	Turnover in Rs Lakhs
2014-15	14.2 Rs Lakhs
2015-16	52.45 Rs Lakhs



## PROJECTS EXECUTED:

<u>Sr.No</u>	<u>Client</u>	<u>Project Name</u>	<u>Scope</u>	<u>MT</u>	<u>Remark</u>
<u>1.</u>	<u>Varadh Devloper</u>	<u>Pre Engineering Structure</u>	<u>Column, Rafter, Shiting, Purlin</u>	<u>11</u>	<u>2 coat of paint system</u>
<u>2.</u>	<u>Neolite Buildcon Pvt.Ltd</u>	<u>Pre Engineering Structure</u>	<u>Column, Rafter, Shiting, Purlin</u>	<u>18</u>	<u>2 coat of paint system</u>
<u>3.</u>	<u>Neolite Buildcon Pvt.Ltd</u>	<u>Tank, Mixer Structure</u>	<u>MS Tank, Column Chqure Plate Railing</u>	<u>12</u>	<u>2 coat of paint system</u>
<u>4.</u>	<u>Neolite Buildcon Pvt.Ltd</u>	<u>China Equipment Erection</u>	<u>Mixer Stand, Mixer Blade, Srary Tank, Rails, Pipe Line</u>	<u>30</u>	<u>Erection All China Equipment In Site</u>
<u>5.</u>	<u>Baba Food Agro Pvt. Ltd</u>	<u>Roofing Structrue</u>	<u>Kaichi, Purlin &amp; Shting</u>	<u>6.1</u>	<u>2 coat of paint system</u>
<u>6.</u>	<u>Global Alloys Pvt. Ltd</u>	<u>Pre Engineering Structure</u>	<u>Column, Rafter, Shiting, Purlin</u>	<u>27</u>	<u>2 coat of paint system</u>
<u>7.</u>	<u>Global Infrastructre Pvt. Ltd</u>	<u>Pre Engineering Structure</u>	<u>Column, Rafter, Shiting, Purlin</u>	<u>14</u>	<u>2 coat of paint system</u>
<u>8.</u>	<u>Wallnett Bricks Pvt. Ltd</u>	<u>Pre Engineering Structure</u>	<u>Column, Rafter, Shiting, Purlin</u>	<u>62</u>	<u>2 coat of paint system</u>
<u>9.</u>	<u>Wallnett Bricks Pvt. Ltd</u>	<u>Pre Engineering Structure</u>	<u>Column, Rafter, Shiting, Purlin</u>	<u>24</u>	<u>2 coat of paint system</u>

## GMFAB INDUSTRIES



**Email Us**

[gmfabindustries@gmail.com](mailto:gmfabindustries@gmail.com)

[info@gmfabindustries.com](mailto:info@gmfabindustries.com)



**Website**

[www.gmfabindustries.com](http://www.gmfabindustries.com)



**Call Us**

**Customer Support :** +91 8975529009

**Project Query :** +91 7798559009



**Write to Us**

**A51 FIVE-STAR MIDC**

**KAGAL-HATKANAGALE**

**KOLHAPUR, MAHARASHTRA**

**PIN-416216**



## PRE ENGINEERED BUILDING

